

SteMaTo™

Sterilization Management Tool



Organize
Track & Trace
Manage
Plan

SteMaTo™: the first comprehensive SPD production management



Management

Treating a large number of sets in time and correctly can only be done with the support of fully process-controlled software that makes the efficient organization and management of all SPD processes possible.

Today's healthcare schedules demand a quick turnaround and therefore teamwork is essential.

With this in mind, we have developed and integrated the most complete management system in the world. Track, plan and review the history from all sets and instruments around different departments within a matter of seconds.

3

Welcome

4

Planning

6

Linked to patient

7

Track at instrument level

9

Unique features

10

Management

11

Loan instruments



Welcome to SteMaTo™

What can you expect from a software supporting your organization?

The difference between SteMaTo™ and most of our competitors is how we view reprocessing. For them, sterilization is just another department. For SteMaTo™, it is a complicated production line involving many steps and professionals, with the common goal of high-quality delivery of sterile instruments and disinfected scopes to internal customers (OR, endoscopy, etc.).

Our “Lean Process” maximizes quality, while minimizing waste and risk. The old concept of “If you want more, it will cost you more” is not part of our practice.

Have it all for a competitive price, SteMaTo™ is here to support your organization, not the other way around.

With the expertise of healthcare professionals, we can implement a process which will increase the flow of sets and instruments.

SteMaTo® is not limited to Track & Trace in the SPD: it also supports the organization of the entire cycle of sets and instruments: SPD, OR, nursing services and others.



Planning SPD linked with OR

Efficient working of the SPD is inseparably connected with a correct and timely coordination with the OR planning

Coordination with the OR planning is a “conditio sine qua non”. An interface between the OR program and SteMaTo™ is essential for the optimization of the Sterilization Department. Therefore, SteMaTo™ can easily be linked with virtually all existing OR planning tools via an interface system.

The link between surgeon - type of operation - used sets is logged as a basis for the allocation of sets to a particular surgery. For each planned surgery, the surgeon receives an overview of the sets to be used during this particular surgery.

SteMaTo™ is unique in the way it calculates a **dynamic** and always **up-to-date profile** per operation. No more need to set up or adjust static profiles on paper.

A complete planning like this gives the SPD a firm grip. As soon as the sets are in the SPD process, they are given a certain priority according to their next usage. The priorities are retained throughout the entire cycle, which provides steering within the SPD for the benefit of the OR program.

Planning



“Think of the schedule of arrivals and departures at an airport which are shown on a large display.”

Planning surgical instruments for daily procedures with SteMaTo™ is a very simple, yet powerful tool. An easy way of visualizing how this works is to think of the schedule of arrivals/departures at an airport which are shown on a large display.

Knowing where the next set of instruments is going or where the sets are coming from is similar to these displays and SteMaTo™ provides you with all the information needed. Planning and knowing the status of each single instrument in the supply chain will minimize time wasted by the manual process.

SteMaTo™ will assign and plan all sets for every single scheduled and unscheduled procedure(s), both inside and outside of OR while collecting information needed for later review and documentation.

Any person with access to our system can walk to the SteMaTo™ display and see the status of a set or procedure taking place in a given procedure room or in the supply chain. All OR's will be monitored and each scan will give a status to the sets in real time, helping OR and SPD to plan the next move.

Using a PDA, an indication is given which set can be used for an emergency, without jeopardizing other planned operations.



Sets linked to the patient

Connecting used sets and instruments to the surgical procedure

A connection with your OR program ensures that the used sets (and any other material) are linked to the operation-surgeon-patient.

Besides the option of opening a SteMaTo™ planning screen with the correct operation information, there is also the option of scanning the used sets and other materials with a BesCo programmable hand-held scanner and to link them to the operation.

This enables you to obtain complete online tracking down at patient level.

- Applicable everywhere
- No loss of time by staff
- Easy to execute
- Only a barcode reader needed



Tracking at instrument level

Data Matrix allows more efficient utilization of resources in assembling operations throughout the SPD

'Laser Etching' is the technique of directly marking a 2D- barcode (ECC200) on an instrument with a special wavelength YAG/Fiber laser.

The laser marking method produces a high-quality, high contrast lasting mark, ideal for 2D-barcode readers, such as the Besco Reader, enabling to recall a particular instrument when needed. Data Matrix laser marks can be embedded on all kinds of instruments, irrespective of size, color or material.

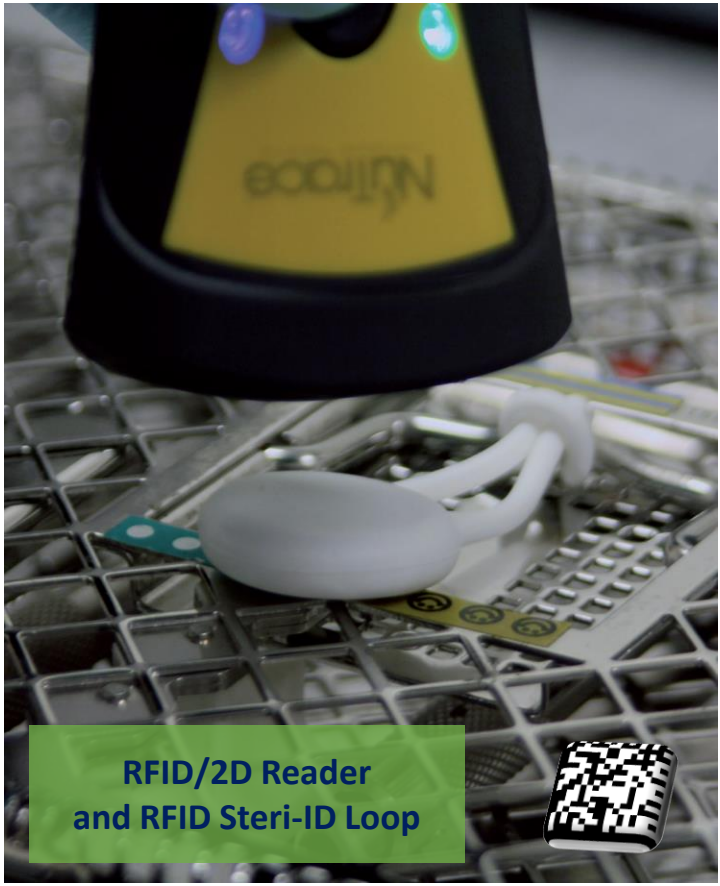
The Data Matrix marking technique is a significant improvement compared with the use of RFID sensors, small datamatrix labels and other tags which are far from ideal when used for instruments and other small devices, as they may potentially loosen and fall off and often are a source of contamination.

For all these reasons, Data Matrix is becoming implemented and safely utilized around the world. This method is now suggested by the FDA with the GS1 protocol for UDI.

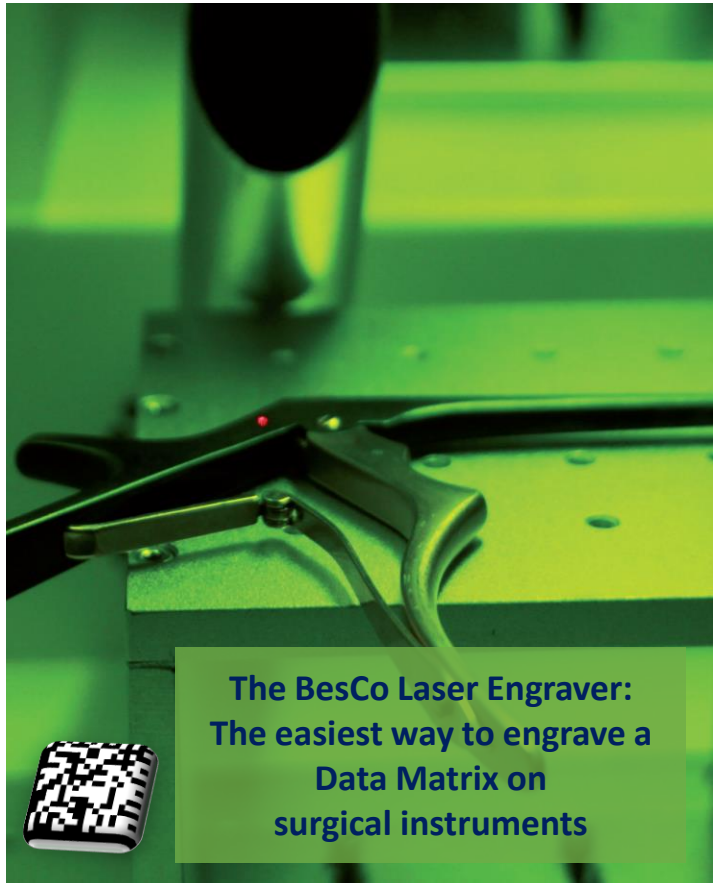


BesCO
PROJECTS

**The BesCo Data Matrix Reader:
The fastest 2D-reader in the
world and the most affordable
in the market**

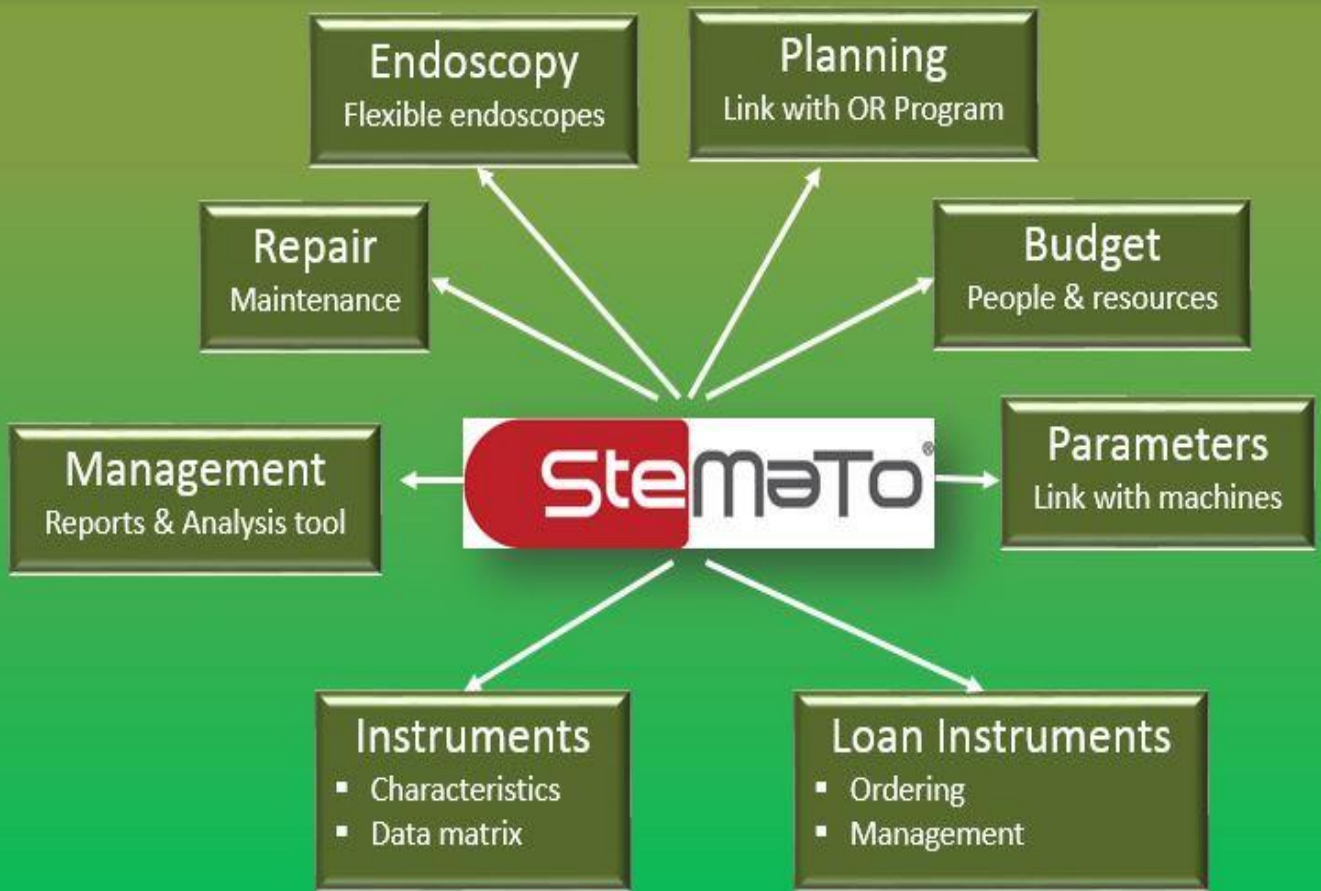


**RFID/2D Reader
and RFID Steri-ID Loop**



**The BesCo Laser Engraver:
The easiest way to engrave a
Data Matrix on
surgical instruments**

Unique Features



SteMaTo™ is a first class comprehensive SPD-production and OR-management Tool

Treating a large number of sets correctly and in time can only be accomplished with the support of a fully process-controlling software that enables an efficient organization and management of all SPD processes.

SteMaTo™ is based on a technique applied in the industry for production management and monitoring. It is a **S**terilization **M**anagement **T**ool that monitors the entire instrument process, from use at the patient back to being ready for use in the OR again.

SteMaTo™ is not limited to Track & Trace in the SPD: it also supports the organization of the entire cycle of sets and instruments: SPD, OR, nursing services and others.



Management



Tracking, managing and planning is where we make the difference

The importance of budget control and the need for a transparent cost structure is unmistakably present in the modern SPD. Therefore, correct reporting to management, SPD and OR line managers and SPD staff is essential:

Management reporting:

- Deployment of staff and equipment
- Budget & Costs structure

Reporting to SPD and OR line managers:

- Overviews of usage
- Lead times
- Production display

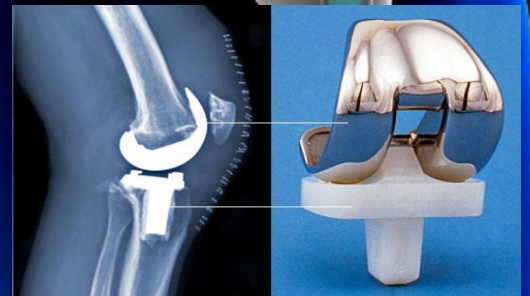
Reporting to SPD staff:

- Instrument registration
- Process information
- Planning screens with sets to be treated with priority highlighted
- Report of missing instruments

Requested management information can be provided in different ways:

- Standard reports
- Integration in the data warehouse
- Business Intelligence Database

Loan Instruments



SteMaTo™ Loan instruments: coordination and management of loan instruments, from ordering to patient usage

The ordering, monitoring and tracking of loan instruments is a very specific process. Each surgeon, every hospital and every supplier has a different (usually not well optimized) method for processing a significant volume of the SPD-activity (6 - 10 %) and preparing these instruments for the next operation.

Initially, SteMaTo™ Loan Instruments takes the individual surgeon's existing working methods into account as much as possible, but subsequently takes over the communication, monitoring and tracking process:

- Ordering loan instruments
- Confirmation and dispatch of the delivery
- Receipt of the delivery
- Pick up of the used loan instruments
- Possibility to print a delivery note and a decontamination form.

SteMaTo™ Loan Instruments can be linked to any OR program. This means that the order can be placed directly by the surgeon, the secretariat or the OR. The loan instruments are fully tracked, down to set level.



**Artificial intelligence is no match for the team work of
the SPD & OR team**

Besco Projects
Aardbruggenstraat 81
B-3570 Alken
Belgium
+32 11 48 53 10
www.besco.be

